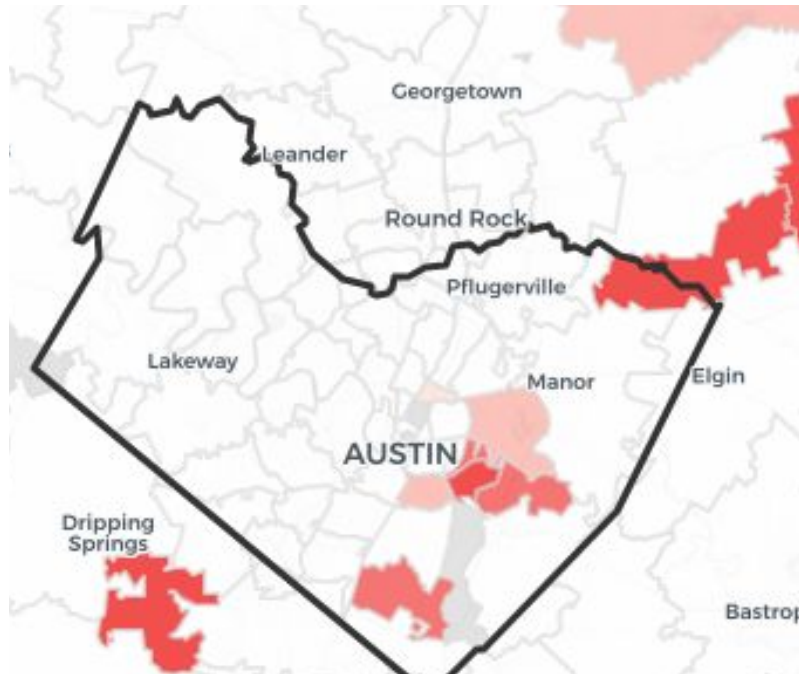




# Child Care Challenges: **Access**, Affordability, Quality

## Access at Licensed Capacity

- Licensed capacity (“minimum standards”) vs. operating at high quality
  - **9** 18-month olds with 1 caregiver vs. **4** 18-month olds with 1 caregiver



## Access at Licensed Capacity

124 seats per 100 children of working parents

# Travis County: **Affordability**

## **Highest cost for child care in the state - especially for infants & toddlers due to ratios**

- Labor
- Facilities (Commercial Rent, Utilities)
- Materials and Food
- Overall high cost of living vs. other communities

## **Child Care business model has limited revenue options**

- What can caregivers reasonably pay
- Greatest expense for families equal to or just below housing
- State Child Care Assistance is based on State Median Income and is extremely limited (\*not an entitlement)
- Labor intensive but low wages and few benefits

## **Expansion of Public Pre-K**

- Pre-K tuition has historically subsidized costs for infant and toddler classrooms
- Model needs to be able to fund infants/toddlers without PreK4

# Travis County: Quality

## Structural Quality:

- Low ratios AND group sizes
- Classroom environment - indoor and outdoor
- Qualifications, training, and experience of the teachers and staff
- Policies & procedures

## Process Quality

- Warm and responsive interactions with adult
- Classroom observations - activities play & instruction, language
- Supported peer interactions
- Materials children interact with

**Quality COSTS more!**



# Why Does Child Care Cost So Much Yet Providers Make So Little? | Child Care Aw...

Watch later

**\$400,000**

- \$48,000
- \$92,000
- \$260,000



**LEAD TEACHERS**

**\$13.00**  
PER HOUR



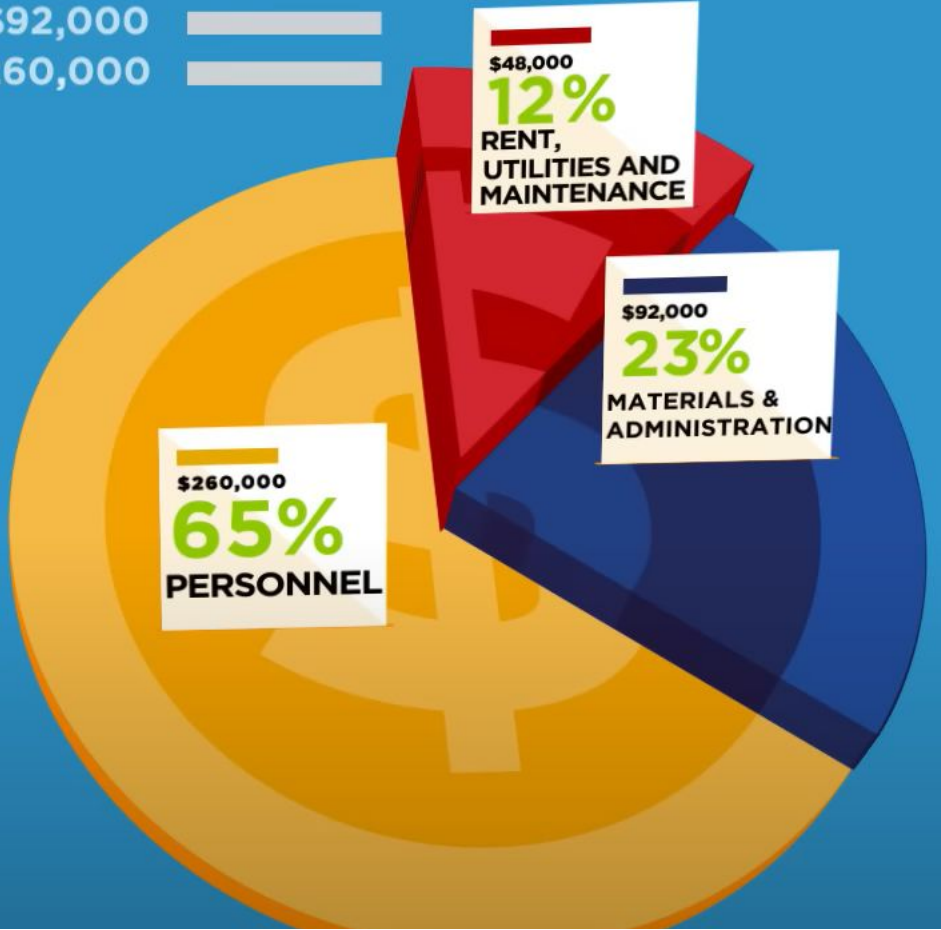
**ASSISTANT TEACHERS**

**\$10.50**  
PER HOUR



**DIRECTOR**

**\$22.00**  
PER HOUR



Play (4)

# Childcare Assistance

The Texas Workforce Commission provides scholarships for child care for children under 13 years old. Child care scholarships are available to help parents **work, search for work, or attend school or job training**. TWC allocates funding to Local Workforce Development Boards to assist parents who are working or pursuing job training or education.



Workforce Solutions Capital Area manages the Child Care Services Program for Travis County. State funding targets approx **3,136** children per day.

**As of September:** waiting list for subsidies has more than **5,000** children - an increase of **43%** since six months ago.

Current estimated waitlist time

**24 months**

The estimated amount of time before we outreach you for enrollment

# Childcare Basics

As of **9/2024** the Texas child care funding through TWC for Travis County served **2,614** children.

**152** Infants

**508** Toddlers

**1,129** Preschoolers – some full time, some part time

**825** After School (age 6–13) – part time

Payment rates for infants / toddlers are **\$5000 – \$7000** < **cost of high quality**

**28%**

of children under age 6 in  
Travis County live in  
households with low income



**23,706**

children under six in Travis County

live in households  
with low income.

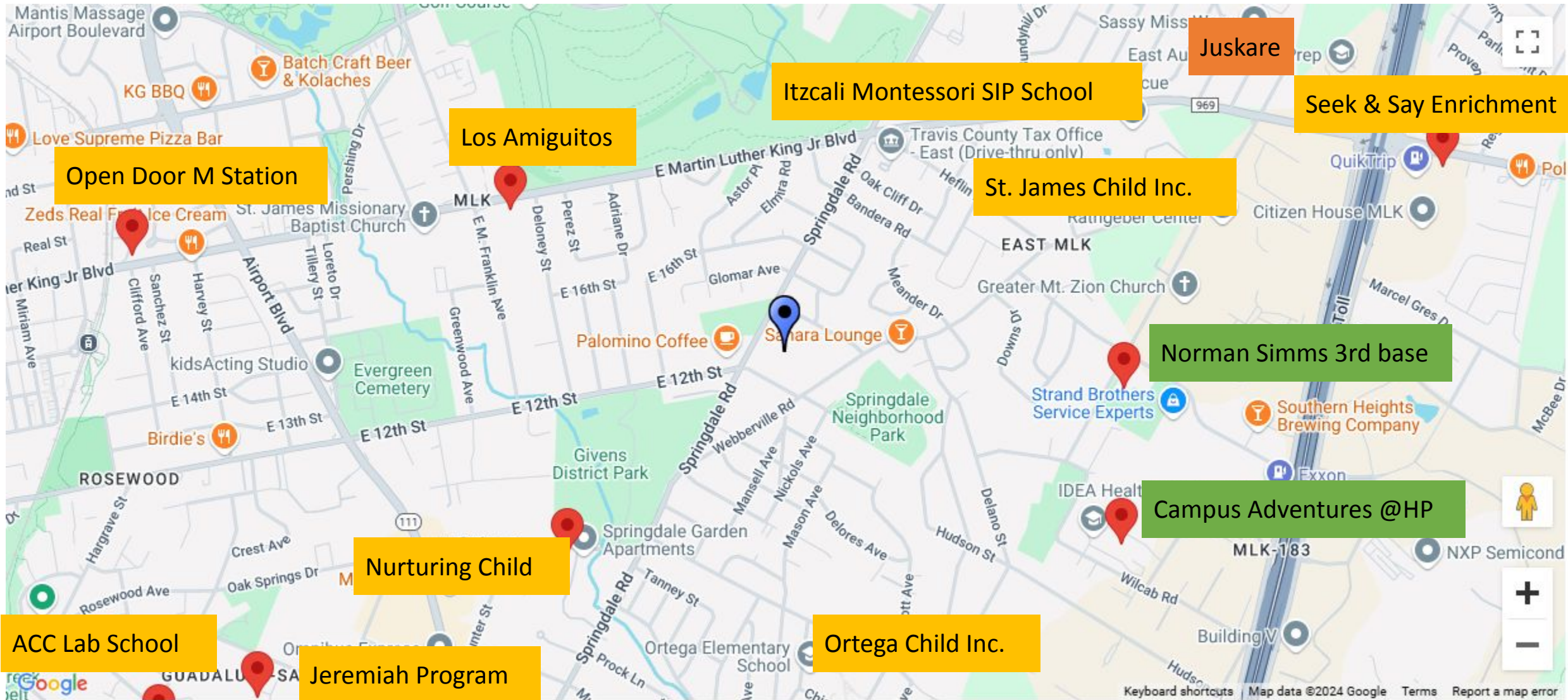
**90%**

of children under  
six from households  
experiencing poverty  
are children of color.

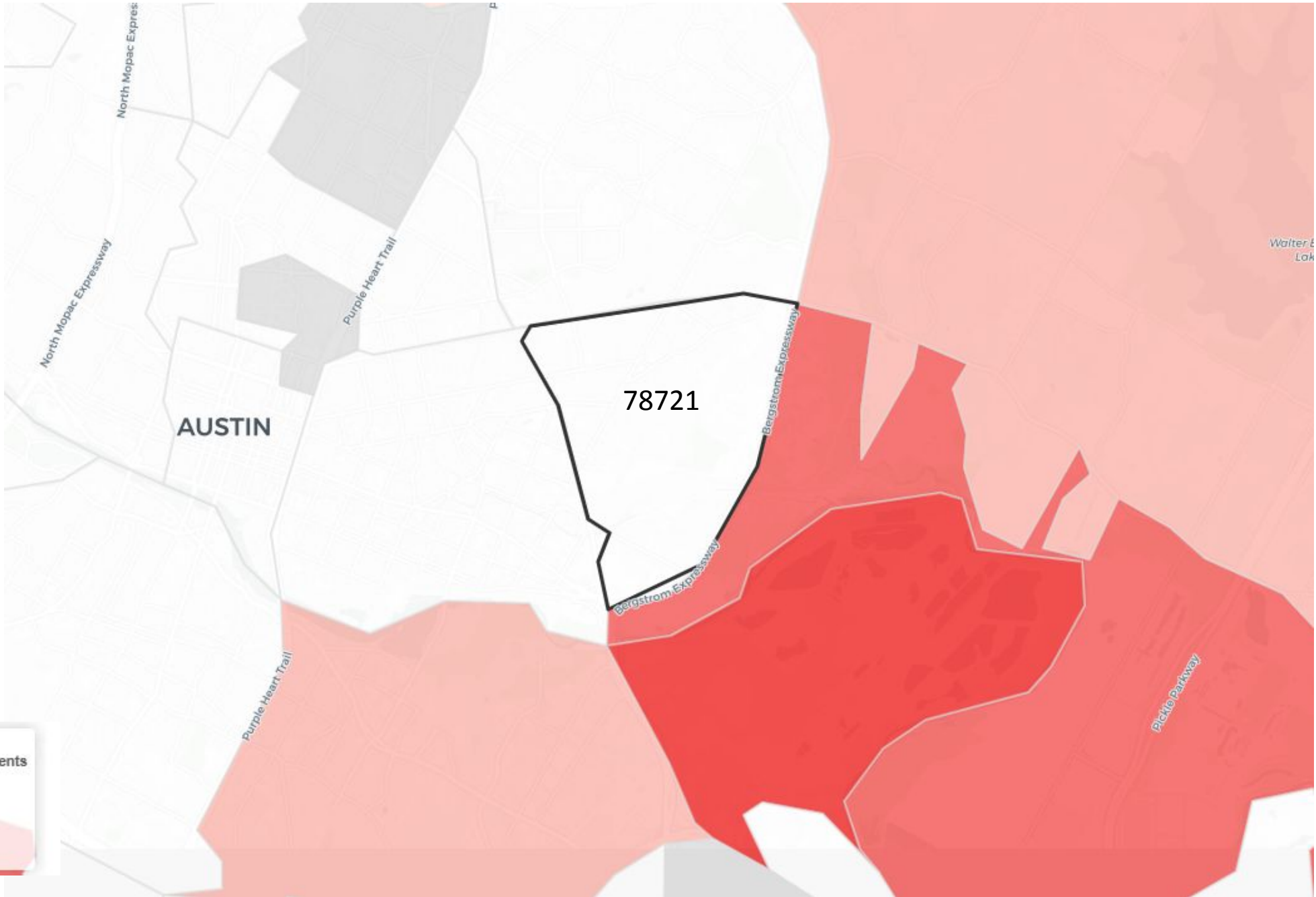


# Licensed & Registered Child Care Programs near Simms

Licensed Capacity = 1,073







**Number of child care seats per 100 children of working parents**

- Not a desert
- 25-33 per hundred
- 15-25 per hundred
- 5-15 per hundred
- 0-5 per hundred

## Summary for 78721

View metrics for specific provider type

Total  Subsidy  TRS

9

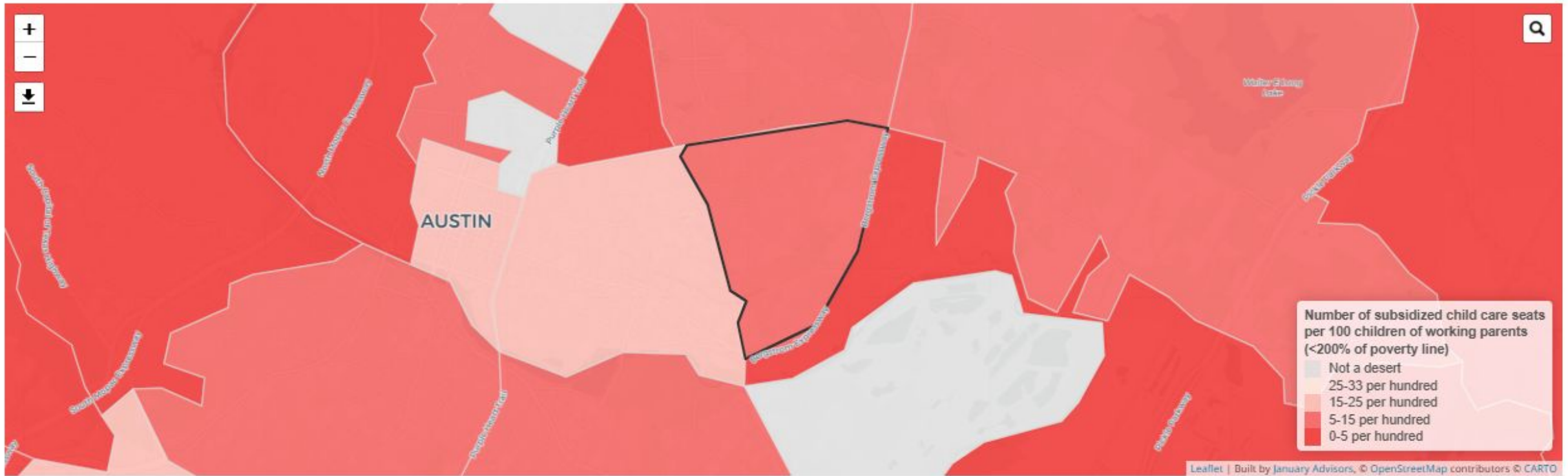
Total Number of Seats

7.8

Subsidy Child Care Seats per 100 Children of Working Parents (<200% of Poverty Line)

1

Total Number of Desert Zip Codes



# Co-location Opportunities & Challenges

## How to Find More Room for Child Care by Repurposing Public Schools

There are many potential advantages to a school-to-community-child-care-hub conversion.

BLOG POST



Source: [New America Blog](#)  
Nov 21, 2024

# Co-location Opportunities & Challenges

## Opportunities:

- Maintain educational purpose
- Increase child care supply
- Reduced costs for child care operators/ stream of revenue for District\*
- Comparatively low barrier entry to use for child care
- Meet community need
- Potential addition of 2/Gen partner or other family supports

## Challenges:

- Requires some investment for conversion of space (indoor/outdoor)
- Needs clear security plan / background checks if there are additional operations

*\*Depends on negotiated agreements*

# How might Travis County Prop A impact this option?

Prop A (or the Travis County Voter-Approved Child Care Fund) will generate additional funding that should be fully operational by 2026:

- **Contracted slots**
  - Additional public funding for infants/toddlers/three year olds.
  - Child care operations can commit to infant/toddler/ three year-old slots with guaranteed payments for full capacity with rates equal to cost of quality
- **Expanded child care workforce** with increased wages
- **Option for funding expanded hours** if there is community need
  - Ex: evening, weekend

**Prop A does not include funding for capital investments**