



REPURPOSING SIMS ELEMENTARY
COMMUNITY ENGAGEMENT

ABOUT TOPO

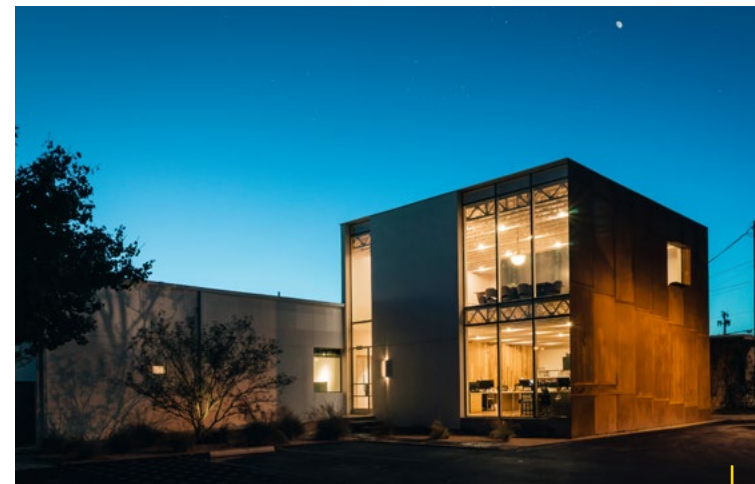
TOPO brings a unique perspective to real estate drawing from its experiences founding and operating hospitality businesses.

The company creates uncommon spaces where thoughtful design produces meaningful impacts for its tenants, partners, and community - while having fun along the way.

The fully integrated team finds innovative real estate solutions for businesses seeking dynamic and attainable workspaces. The company builds relationships with best-in-class partners who share its passion for activating destinations and helping them thrive.

TOPO is proud of what it has accomplished and excited for the opportunities ahead.

- A 5540-A North Lamar
- B 826 Houston
- C Springdale General
- D Howard Post
- E 4910 Burnet Road
- F Canopy

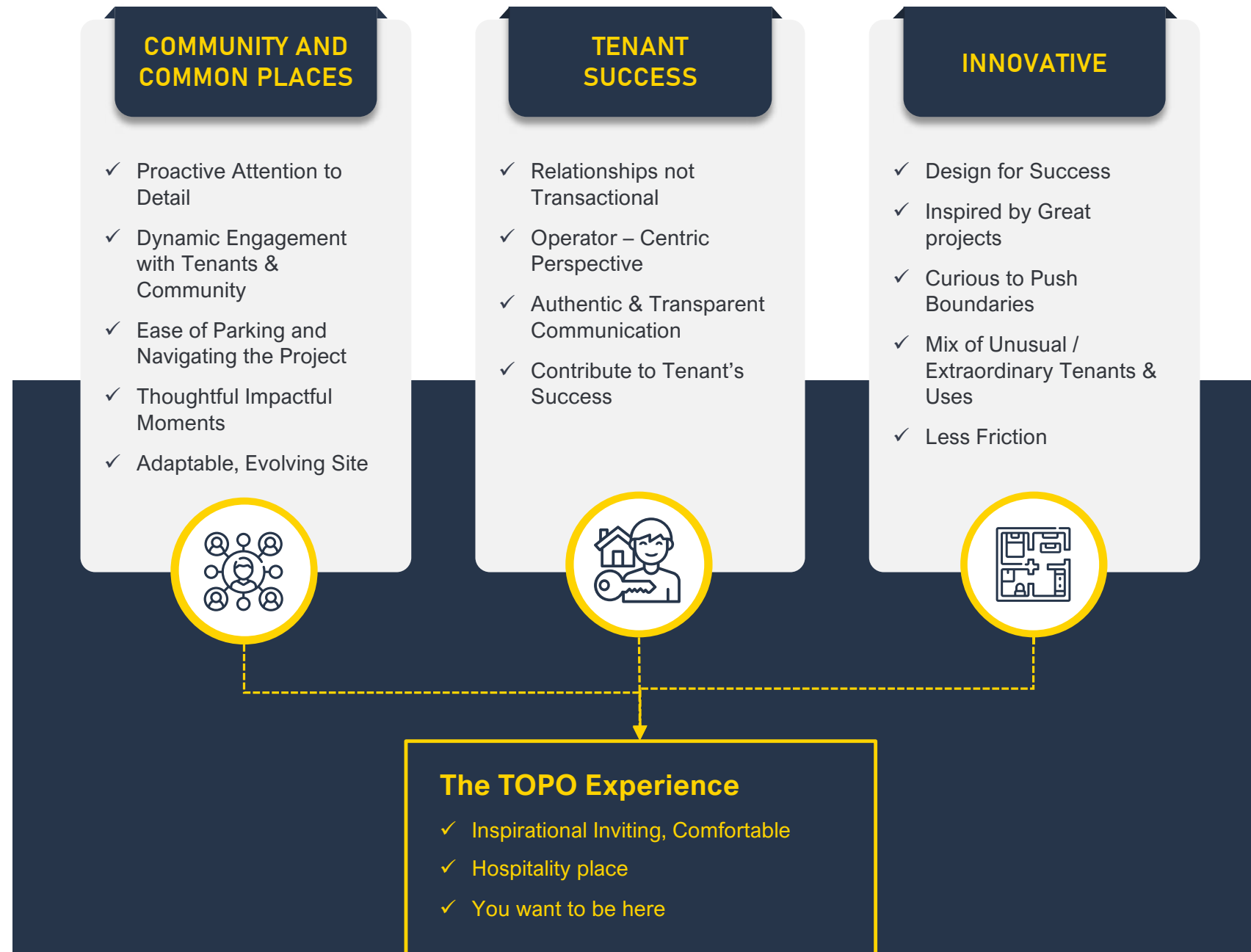


D

E

F

VISION FRAMEWORK



CANOPY

GOODWILL DISTRIBUTION CENTER



CANOPY

EAST AUSTIN CREATIVE MECCA

Canopy is a creative community set within a reimagined East Austin warehouse. Artist studios, creative office spaces, art galleries, and cafes are stitched together with communal courtyards and covered breezeways, emphasizing the connectedness between art, culture, and the public.

Owned since : July 2011
 Land SF : 162,718 SF (3.74 acres)
 Improved SF : 63,278 SF
 No. of Tenants : 103
 Architect : Michael Hsu Office of Architecture

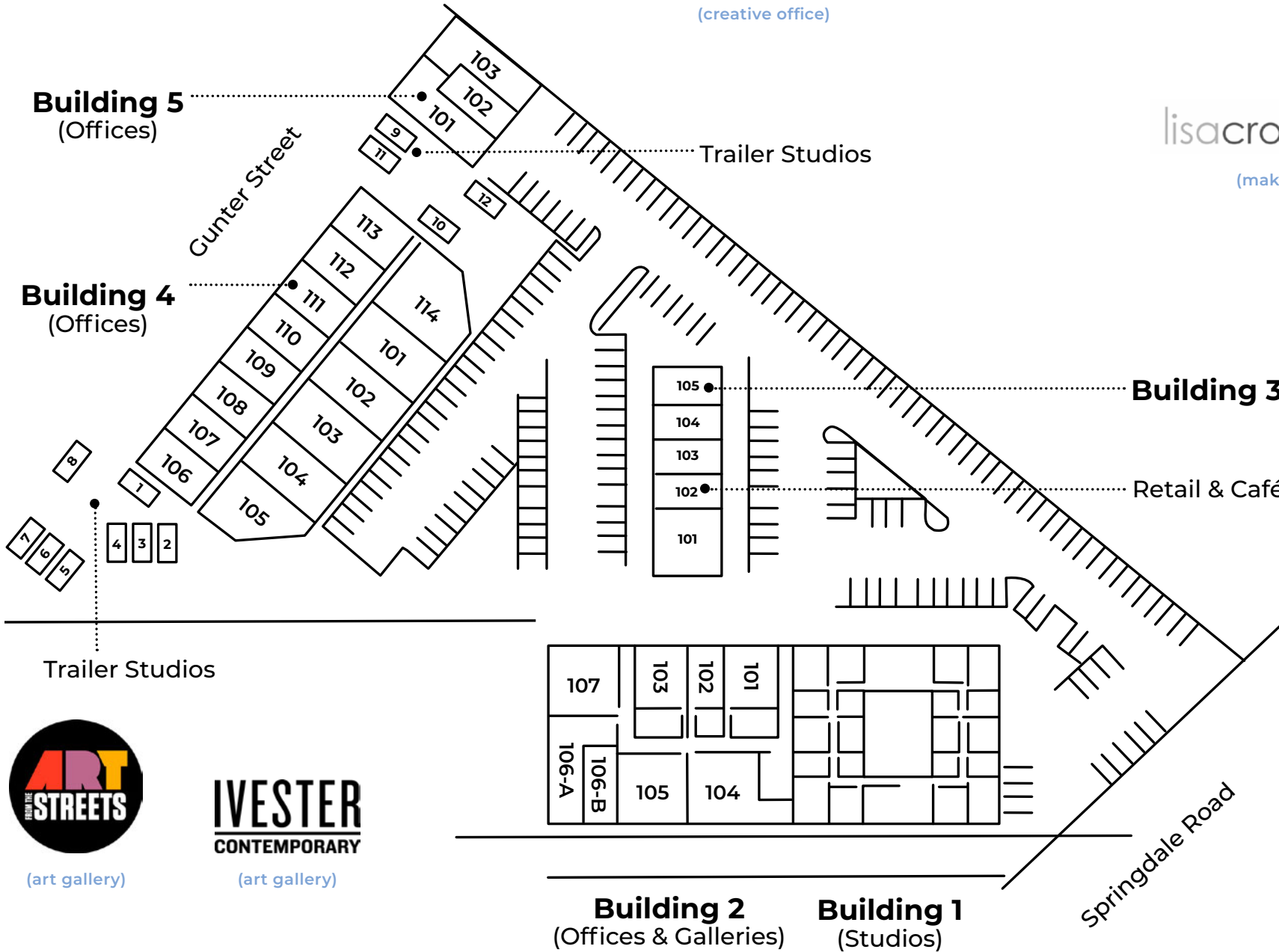
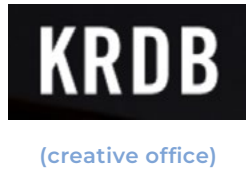


CANOPY

SITE PLAN

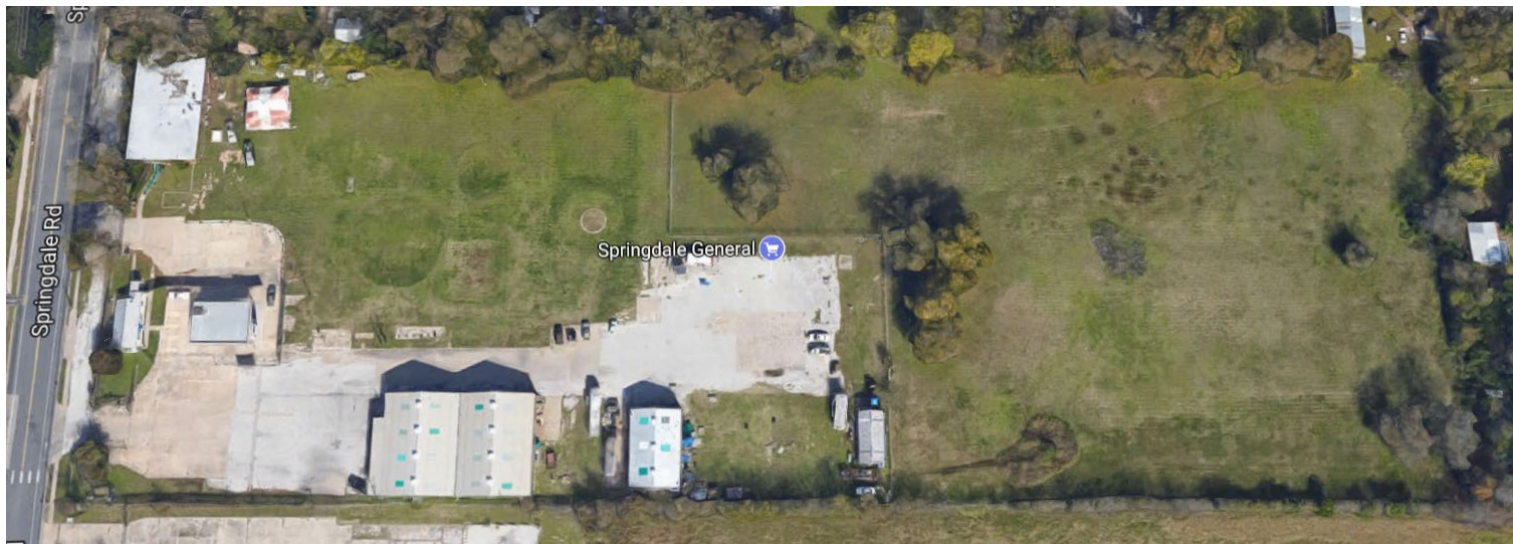


(creative office)



SPRINGDALE GENERAL

TANK FARM



SPRINGDALE GENERAL

10 ACRES OF OBTAINABLE CREATIVE SPACE IN EAST AUSTIN

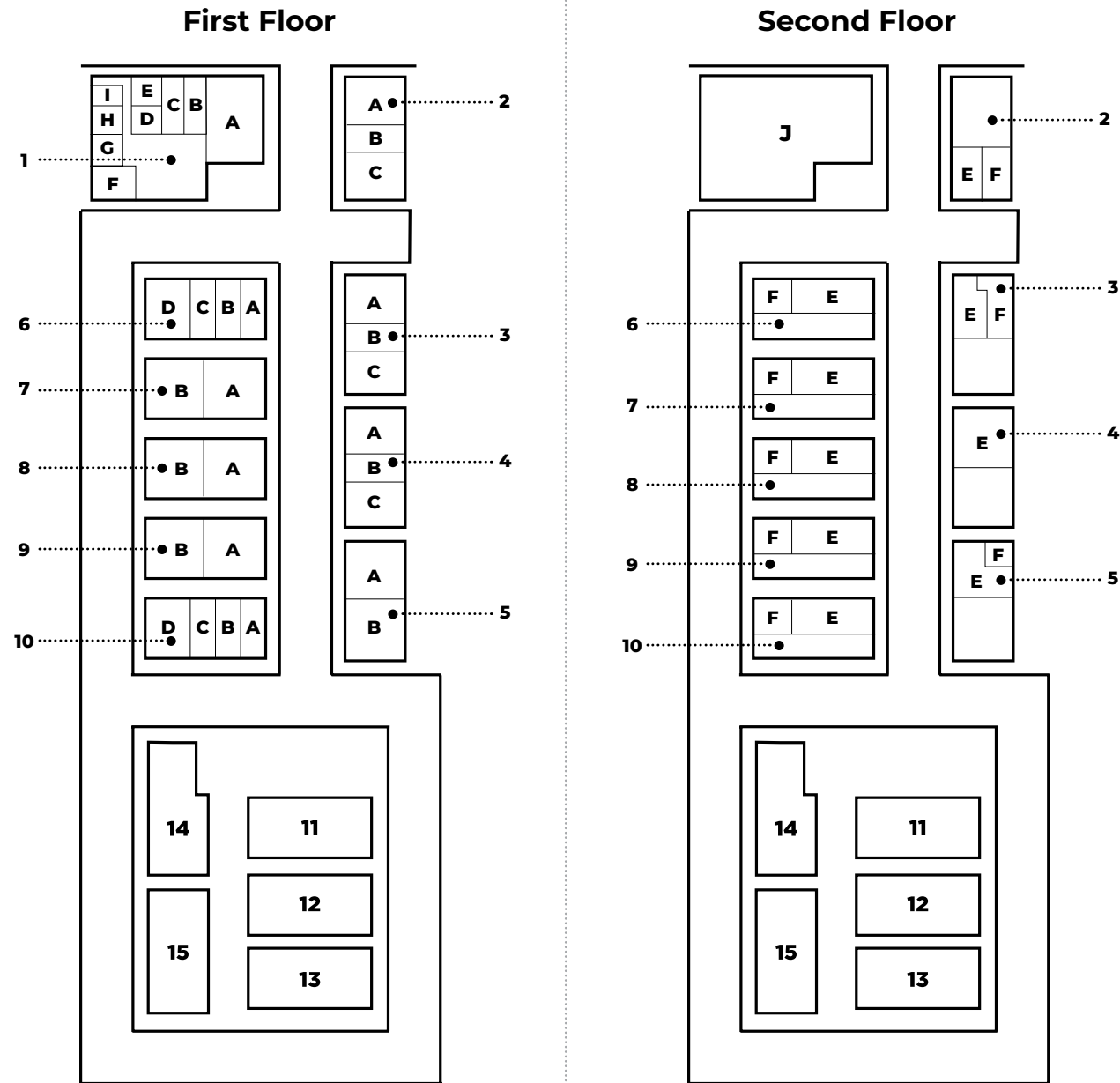
The mission of Springdale General is to keep the creative class in Austin by building a campus of affordable maker studios, creative office space, test kitchens, and workshops in East Austin. With over 165,000 square feet of space on 10 acres, Springdale General is home to a diverse group of businesses, from coffee roasters to tech startups to non-profits.

- Owned since : February 2015
- Land SF : 435,164 SF (10 acres)
- Improved SF : 165,000 SF
- No. of Tenants : 51
- Architect : Michael Hsu Office of Architecture



SPRINGDALE GENERAL

SITE PLAN



ALIGN
(pilates)

BROAD STUDIOS
(artist collective)

creative ACTION
(non-profit)

DANNY GANI
(hair salon)

IDEA PEDDLER
EST. 2011
GOOD WORK
For Nice People
(creative office)

Latinitas
(non-profit)

LOVE WELD
(retail)

MEDICI
(coffee + roasting)

met/gal
ART + ADVISORY
(art gallery)

Paper + Craft PANTRY
(makers/retail)

pump studios
(creative office)

SETTLE CERAMICS
(maker)

sky Candy
(fitness)

UROKO
(restaurant)

wingman KITCHENS
(commercial kitchen)

A MIX OF USES

Tenant	Square Feet	Maker	Non-Profit	Artist	Culinary Arts	Creative Office	Health/Wellness	Social Impact	Education	Woman or Minority Owned
ALIGN east	1,421					•			•	
Aurora Energy Research	10,353							•		
Austin Parks Foundation	1,639		•				•	•		
Beat Box Beverages	2,460				•					
Broad Studios	1,639	•		•					•	
Casa Loba	1,480	•		•					•	
Central Athlete	6,350					•				
Contentstack	5,064								•	
Creative Action	10,340		•				•	•	•	
Damn, Glam!	1,246					•			•	
Found	2,214		•				•	•		
Friends of the Children	4,599		•				•	•	•	
HOK Architecture	3,121				•					
HousingWorks Austin	777		•				•	•	•	
Huston Tillotson	6,813		•				•	•	•	
Idea Peddler	3,425				•				•	
Jay Paul Company	777									•
JDI	9,383									•
Julie Myrtille Bakery	718				•					•
Kirksey Architecture	6,813				•					
Latinitas	3,227		•				•	•	•	
LEAP Structures	2,460				•					
Lionheart Places	2,460				•				•	
Love Weld	516	•								•
Marcus Technologies	3,700									
Medici Roasting	5,133				•					
Metropolitan Gallery	2,471			•						•

Tenant	Square Feet	Maker	Non-Profit	Artist	Culinary Arts	Creative Office	Health/Wellness	Social Impact	Education	Woman or Minority Owned
Milhaus Development	1,359									
No Good Tattoo	1,480			•						•
Notley Ventures	10,900		•					•		
Paper + Craft Pantry	2,214	•				•			•	•
Picturebox Productions	1,480					•				
Pinwheel	2,460					•				•
Propulsion	1,867					•				
Pump Studios	3,143					•				
Radiant RFID	4,049					•				
Roommate Collective	1,480	•				•				•
Settle Ceramics (Eliana Bernard)	777	•		•						•
Shmoody	777					•	•			
Sky Candy	6,813					•				•
Texas Book Festival	2,025		•					•		•
Texas Defender	3,229		•					•		
The Barbashop	656					•				
The Front Page	1,841				•					
The Geyser Group	2,460									•
Unified	777									•
Uroko	1,703				•					•
Way West Creative	777	•				•				•
Wingman Kitchens	1,172				•					
Wonderkind Co	4,674					•				
Workweek Media	3,237					•				
Zhi Tea	3,692				•					•
<i>Total Square Feet</i>	165,641	8,883	45,763	7,847	14,259	46,897	17,263	45,763	42,176	84,717

