

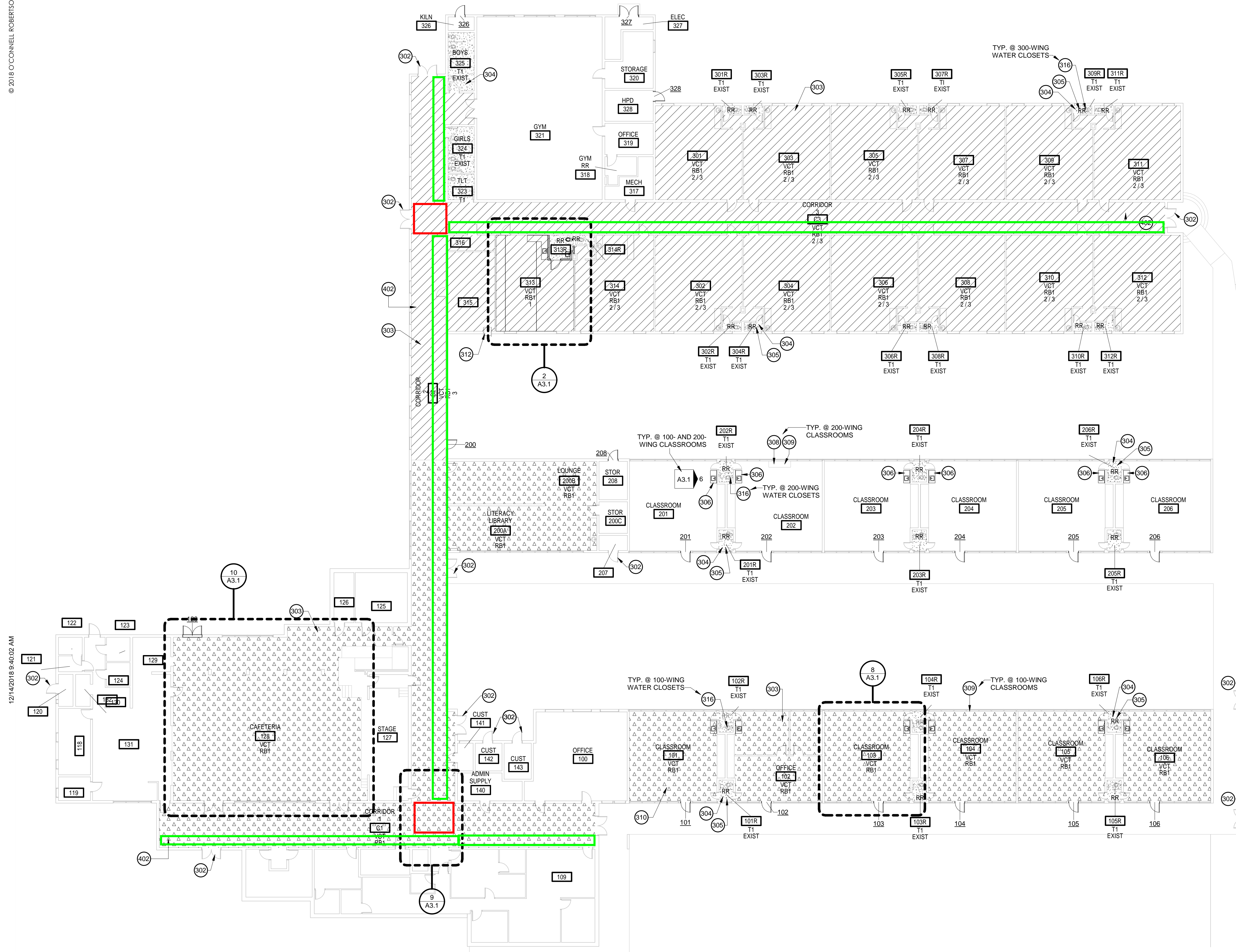
**ADDENDUM No. 3**  
**Request for Competitive Sealed Proposals (CSP)**  
**19CSP105 Renovations at Pecan Springs Elementary School**

February 15, 2019

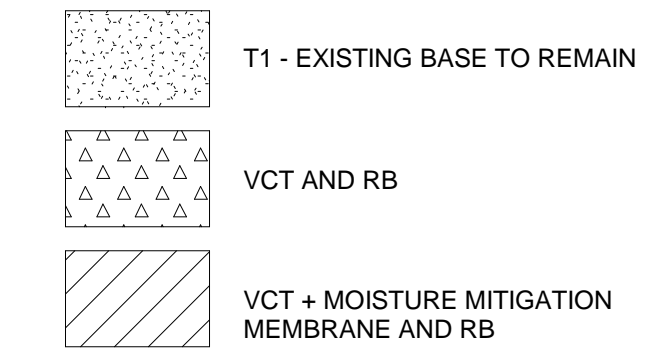
**Item 1: Questions and Answers**

**Item 1:**

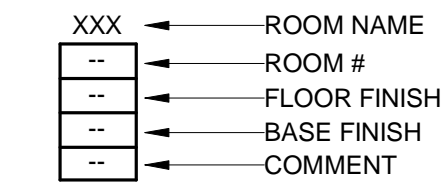
- 1) Are there any window covering specifications for this project?
  - No
- 2) On sheet A3.1, there are typical flooring patterns shown in details. Is the floor tile pattern in the corridor to be figured throughout the entire length of the corridor? Is the classroom flooring pattern to be figured for ALL the classrooms designated to get new flooring?
  - Typical Classroom Floor Pattern (detail 8/A3.1) applies to all classrooms receiving new flooring (as shown in detail 1/A3.1)
  - Typical Corridor Floor Pattern (detail 9/A3.1) applies to all corridors receiving new flooring (as shown in detail 1/A3.1)
  - See Exhibit “A” for a color-coded version of the floor pattern to help clarify. It can be found at [Miller Planroom](#) under 19CSP105
- 3) There is there a total of 12 new RTU Units going on the 100 and 200 wing and then two new condensing units on the 300 wing is that correct? On the plans it just has RTU 2 and 8 marked as new RTU curbs and units. When I was at the pre-conference and looked at the roof those the 100 and 200 wing did not have any RTU on them. If you could just clarify if all the RTU 1-12 are new curb and units or if they are just new curbs for RTU 2 and 8?
  - It’s all of the units. RTU 2 and 8 are just shown as a typical but each room has a note referencing them.
- 4) Can you please provide the Asbestos Report for Pecan Springs ES? Do you have a schedule of when the abatement will take place and be finished?
  - Not currently available
- 5) The demolition plan shows that the frames are to remain. The door schedule makes you assume the door frames are new. Please verify if frames are new or existing to remain. **Are interior doors wood and exterior doors hollow metal? The schedule is unclear.**
  - Door and frame materials (wood vs. hollow metal) are listed in the door schedule on sheet A5.1.
  - Existing vs. New? Should price for all to be new. Keynote 101 on sheet A2.1 incorrectly indicates frame to remain.



**FLOOR FINISH LEGEND**



**ROOM FINISH TAG**



**ROOM FINISH COMMENT**

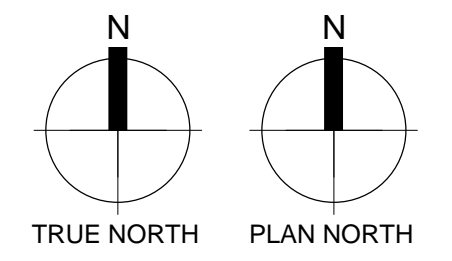
1. REVIEW PAINT AT ALL WALLS
2. REFER TO TYP. CLASSROOM FLOOR PATTERN
3. MOISTURE MITIGATION MEMBRANE AT EXTENTS OF ROOM

**KEYNOTE LEGEND**

- 302 RE-PAIN EXISTING EXTERIOR DOOR TO MATCH NEW EXTERIOR DOORS
- 303 NEW VCT FLOORING - TYP. AT THIS HATCH
- 304 NEW TILE FLOORING - TYP. AT THIS HATCH
- 305 REPLACE FLANGE GASKET AT TOILET. TYP. IN ALL SINGLE-STALL RESTROOMS LOCATED BETWEEN CLASSROOMS.
- 306 NEW VCT AROUND NEW COUNTER AND SINK AS NEEDED TO COVER THE DIFFERENCE FROM THE DEMOLITION OF PREVIOUS COUNTER AND SINK.
- 307 REPAIR/REPLACE TILE AROUND NEW COUNTER. EXISTING SOAP DISPENSER, PAPER TOWEL DISPENSER, MIRROR TO REMAIN
- 308 NEW VCT AS NEEDED TO COVER WHERE OLD HVAC UNIT WAS LOCATED
- 309 AT VENT BEHIND REMOVED HVAC UNIT. REFER TO VENT INFILL DETAIL ON THIS SHEET.
- 310 REFER TO MECHANICAL DRAWINGS FOR SCOPE OF DEMOLISHED AND NEW DUCTWORK. RE-PAINT EXISTING WALLS AS NEEDED.
- 312 EXISTING ROOF LADDER
- 313 REFRIGERATOR - OFCI
- 316 PROVIDE JOINT PROTECTION AROUND PLUMBING FIXTURE. TYP.
- 402 REFER TO TYP. CORRIDOR FLOOR PATTERN FOR FLOOR PATTERN

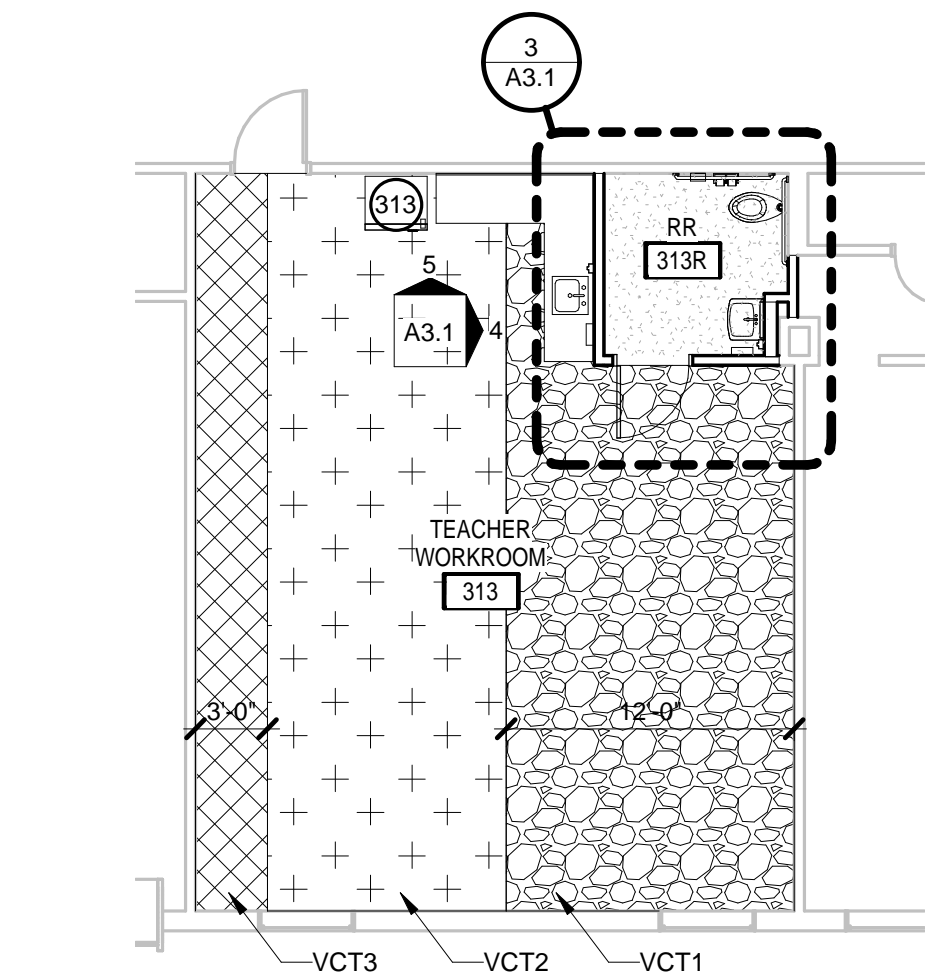
**TOILET ACCESSORIES SCHEDULE**

- TA-1 GRAB BAR 42"
- TA-2 GRAB BAR 48"
- TA-6 SURFACE MOUNTED DOUBLE ROLL TOILET TISSUE DISPENSER (OFCI)
- TA-7 SOAP DISPENSER (OFCI)
- TA-8 STEEL CHANNEL FRAME MIRROR - 18"W X 40"H
- TA-12 SANITARY NAPKIN DISPOSAL
- TA-17 SURFACE MOUNTED PAPER TOWEL DISPENSER (OFCI)

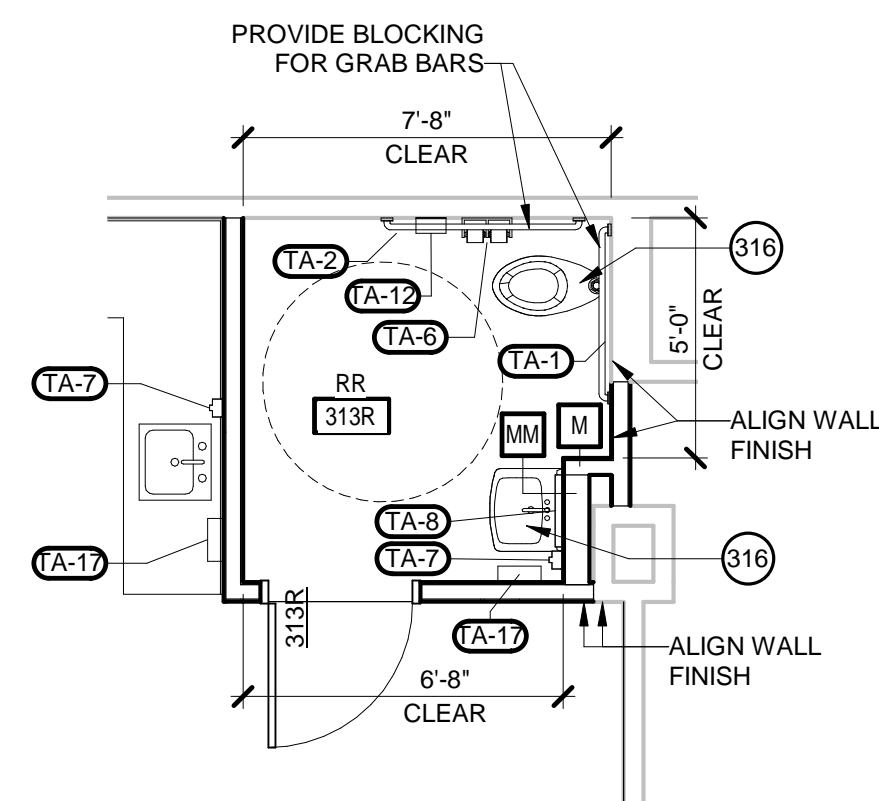


**1 COMPOSITE FLOOR PLAN**

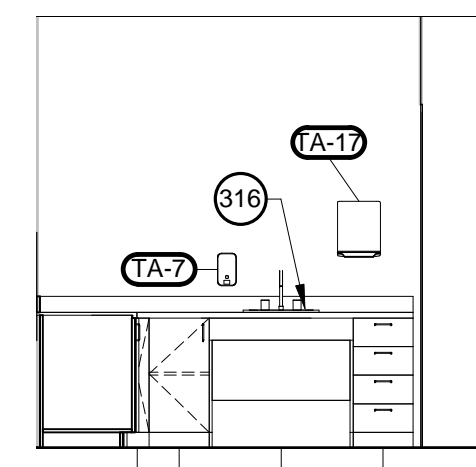
SCALE: 1/16" = 1'-0"



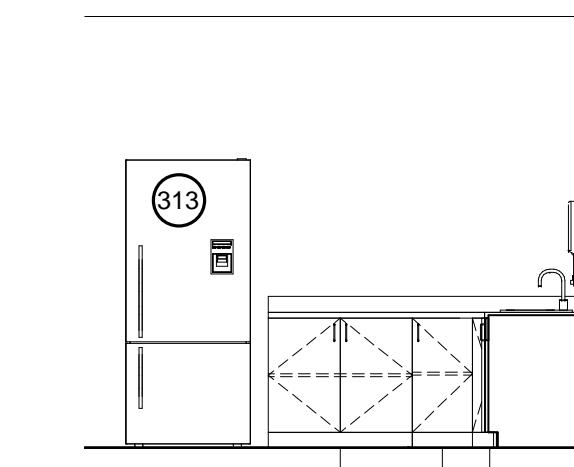
**2 TEACHER WORKROOM**  
SCALE: 1/8" = 1'-0"



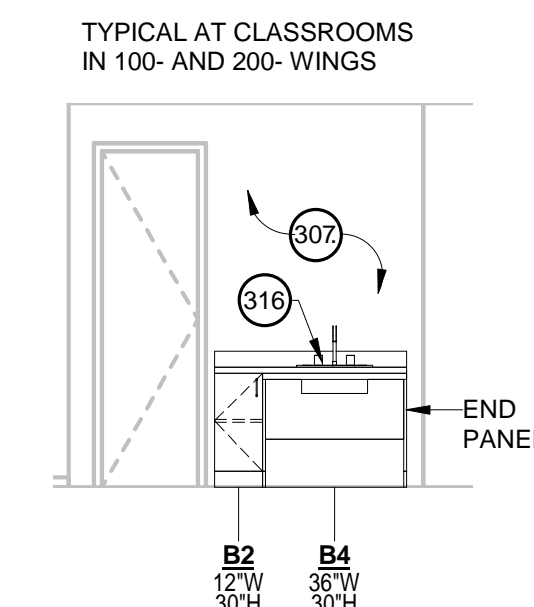
**3 RESTROOM 313R**  
SCALE: 1/4" = 1'-0"



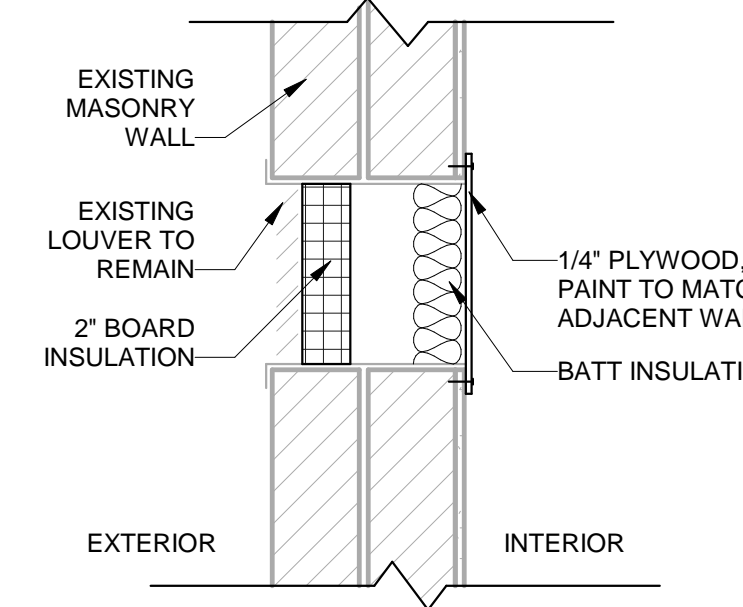
**4 WORKROOM A**  
SCALE: 1/4" = 1'-0"



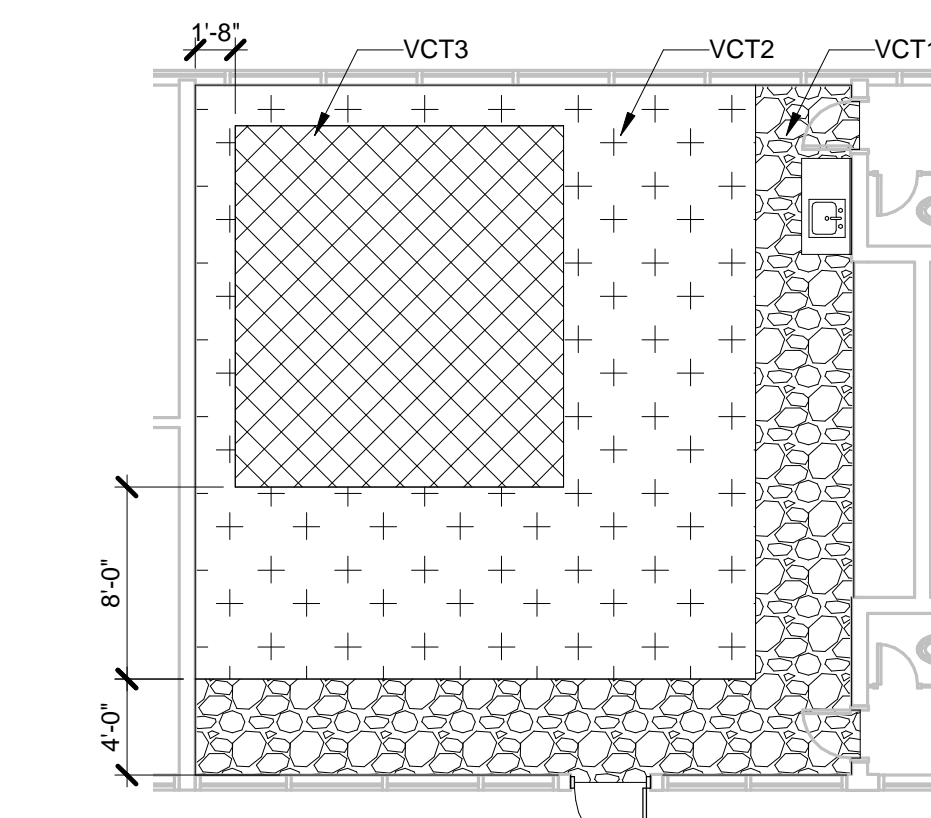
**5 WORKROOM B**  
SCALE: 1/4" = 1'-0"



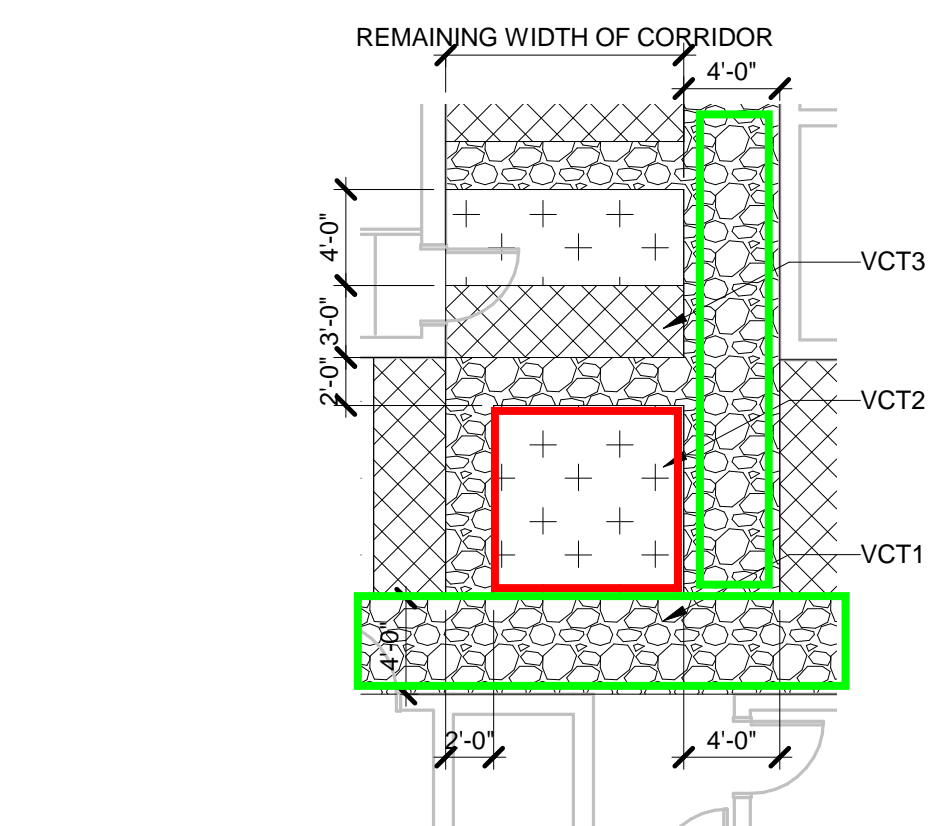
**6 CLASSROOM COUNTER**  
SCALE: 1/4" = 1'-0"



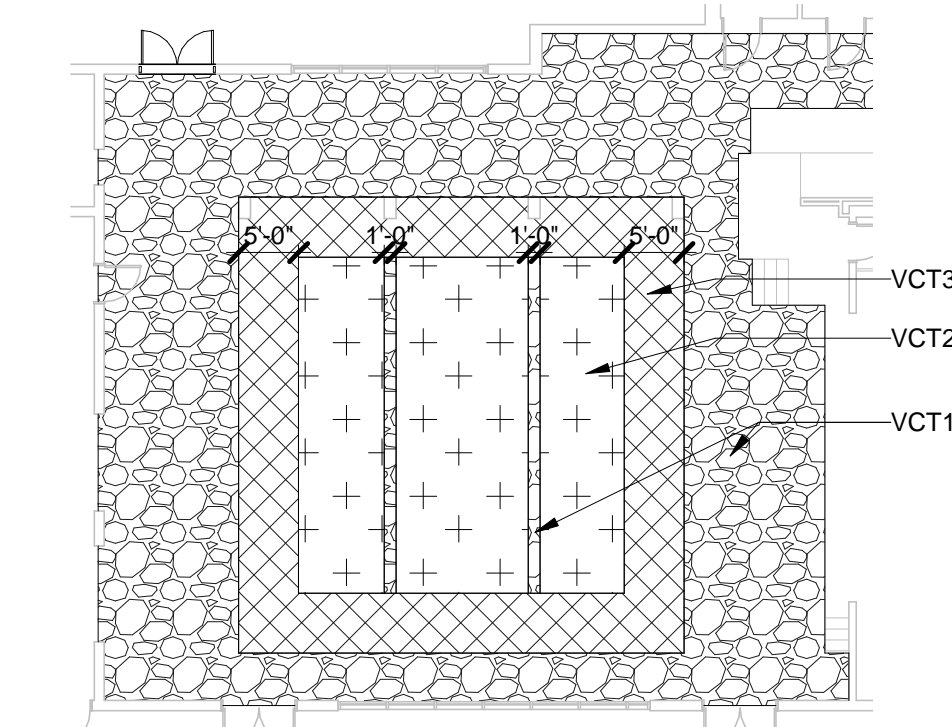
**7 VENT INFILL DETAIL**  
SCALE: 1 1/2" = 1'-0"



**8 TYP. CLASSROOM FLOOR PATTERN**  
SCALE: 1/8" = 1'-0"



**9 TYP. CORRIDOR FLOOR PATTERN**  
SCALE: 1/8" = 1'-0"



**10 CAFETERIA FLOOR PATTERN**  
SCALE: 1/16" = 1'-0"



NO.	DESCRIPTION	DATE