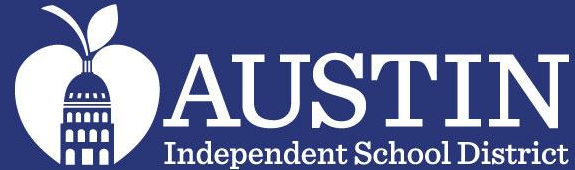


TEA Order:

MTSS Update



2024-25

Matias Segura
Superintendent

Dr. Mary Ann Maxwell
Assistant Superintendent
Elementary Academics

Dr. Susan Diaz
Assistant Superintendent
Secondary Academics

Krystal Colhoff
Director of MTSS



Multi-Tiered System of Support - MTSS Overview

MTSS is a system-level initiative that helps districts improve student outcomes through the use of

- screeners and multiple sources of data
- a continuum of tiered support
- progress monitoring
- data-based decision-making



MTSS Overview

MTSS is not just used for identifying “at-risk” students needing support and providing them with support. Austin ISD is also looking at the comprehensive system of the district and schools to identify systemic obstacles and address them as a preventative measure.

This practice will be implemented through a district-level Child Study Team using the MTSS Data Tracker.

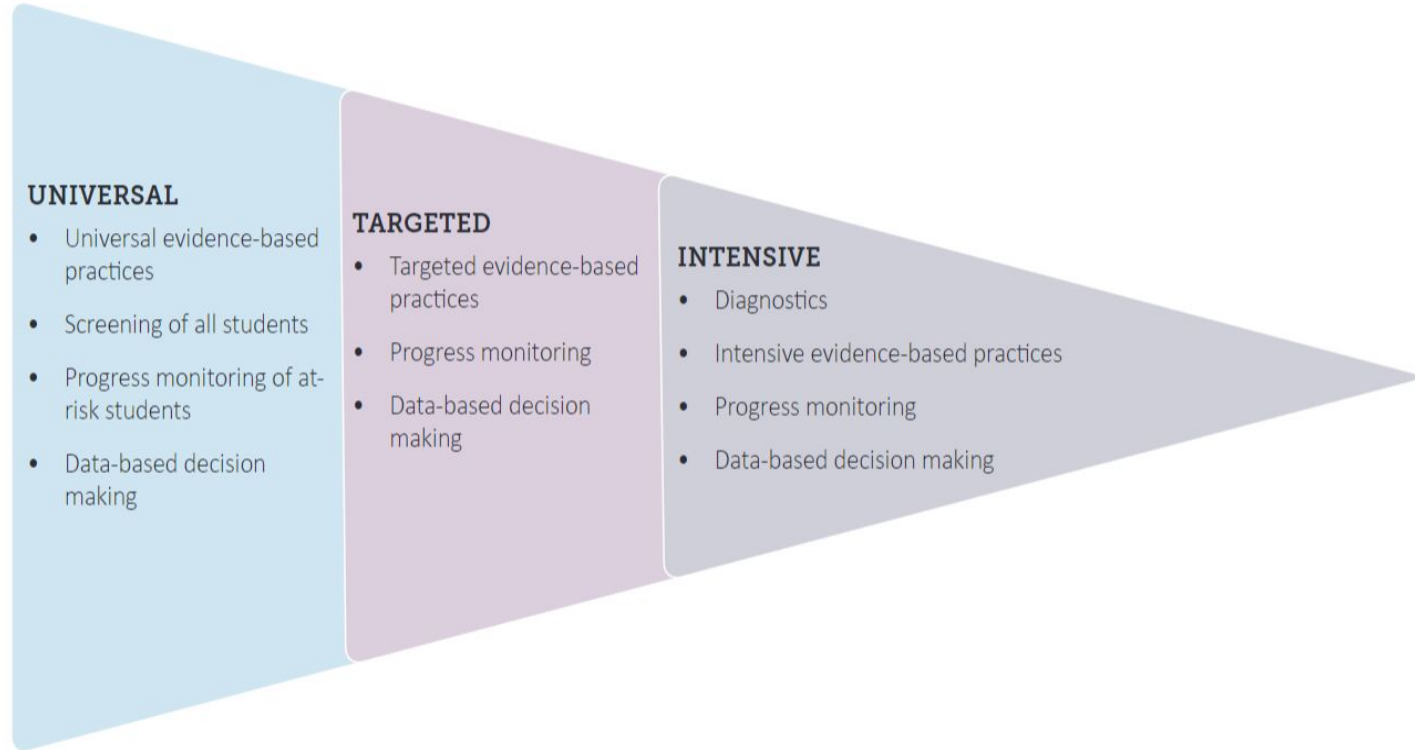


MTSS Tiers

Tier 1 Universal

Tier 2 Targeted 15-20%

Tier 3 Intensive 5-10%





Placement Across Tiers

Increasing level of support

Tier 1

High quality, effective instruction in academics and behavior for all students in the classroom.

Tier 2

After high quality instruction, there is a need for targeted, consistent interventions to be on track for grade level success.

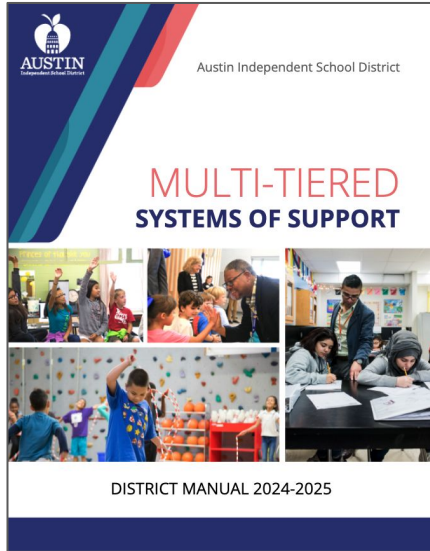
This increased level of support requires setting goals for students and tracking progress toward goals.

Tier 3

After high quality interventions in Tier 2 are delivered with fidelity, student is not progressing and needs more intensive interventions.



MTSS Manual



- Content aligned to the TIER modules that all staff completed in 2023-24 and all new teachers are receiving in 2024-25
- Approved in content and overall MTSS structures per TEA on June 28, 2024
- Disseminated to all district and campus leadership teams and teachers
- Submitted proof to TEA of dissemination on Oct 1, 2024



MTSS Manual



- Campus administrators received a full Trainer of Trainers (ToT) session on the MTSS Manual at summer Leadership Institute
- Instructional coaches also received the full ToT in July
- Campuses delivered the MTSS training to all teachers the week of August 12th



Classroom Walkthroughs

- All core teachers, interventionists, and inclusion teachers who spend at least 50% of their time in core classrooms will receive one walkthrough in Fall of 2024
- Teachers identified for additional support will receive coaching and two more walkthroughs in Spring of 2025



Classroom Walkthroughs

- MTSS walkthrough forms created for K-12 include all tiers of instruction
- Focus on math and literacy research-based practices
- Inclusion of effective practices for intervention settings



Walkthrough Calibrations

- Principals and Assistant Principals calibrated in September
- Common observation and coaching protocol created and used
- Executive Directors of School Leadership conducted calibration visits as classroom walkthroughs began on campuses



MTSS Leadership Implementation Visits

- All campus leaders will receive one implementation visit in Fall of 2024
- Executive Directors of School Leadership will conduct visits and rate various areas of MTSS implementation
- Leaders identified for additional support will receive coaching and two more walkthroughs in Spring



Upcoming Fall Requirements

- **October 31st – First data submission to TEA to include:**
 - Student universal screening reports in reading and math
 - Percentage of students identified for Tier 2 and Tier 3 intervention
 - Intervention entry and exit criteria
- **December 31st**
 - Submit training logs for campus leaders and teachers for MTSS manual, including protocols for progress monitoring and classroom walkthroughs
 - Complete one MTSS classroom walkthrough for core, intervention, and inclusion teachers
 - Complete one MTSS leadership implementation visit



STRONG Schools
STRONGER Austin

